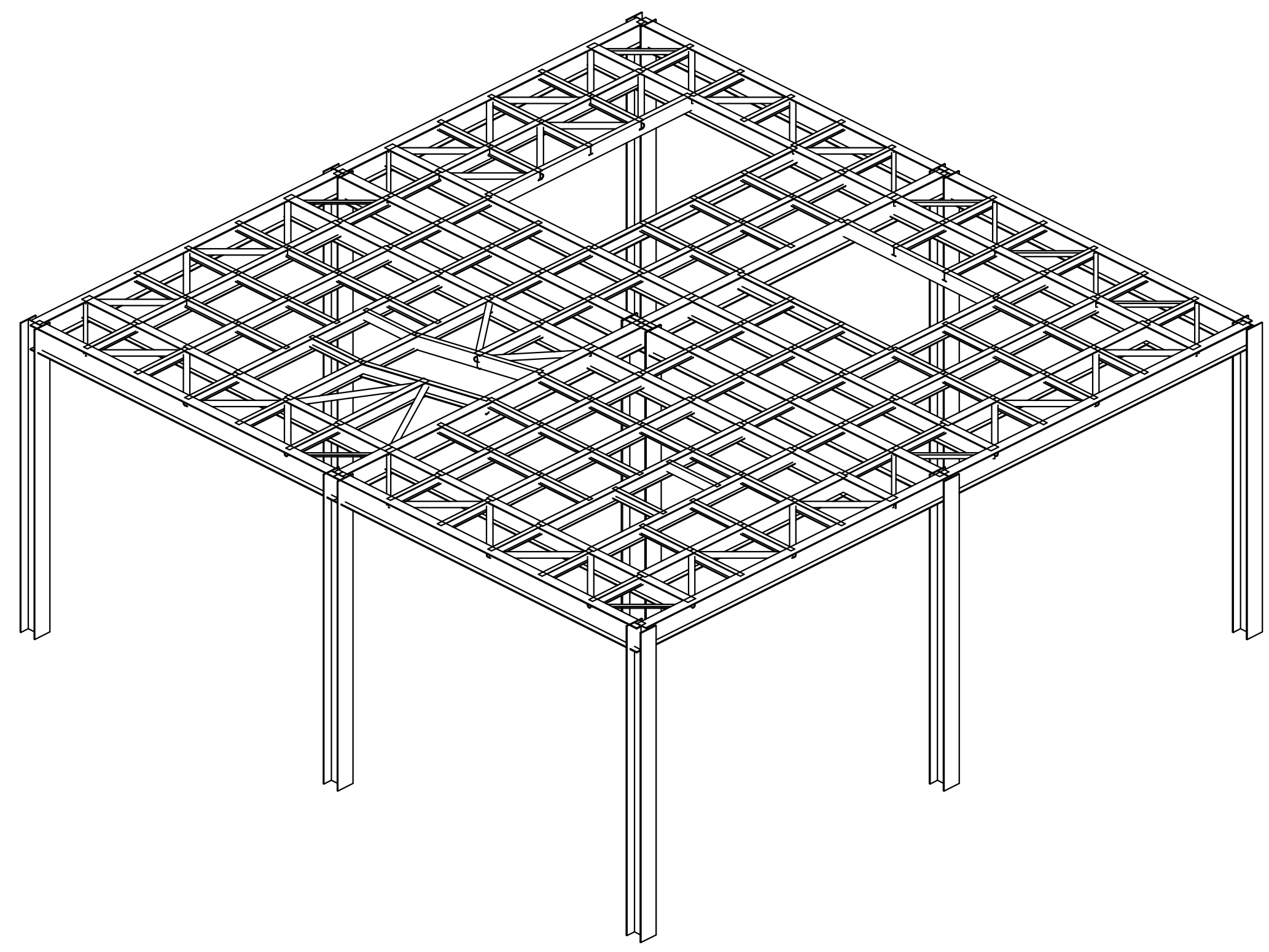
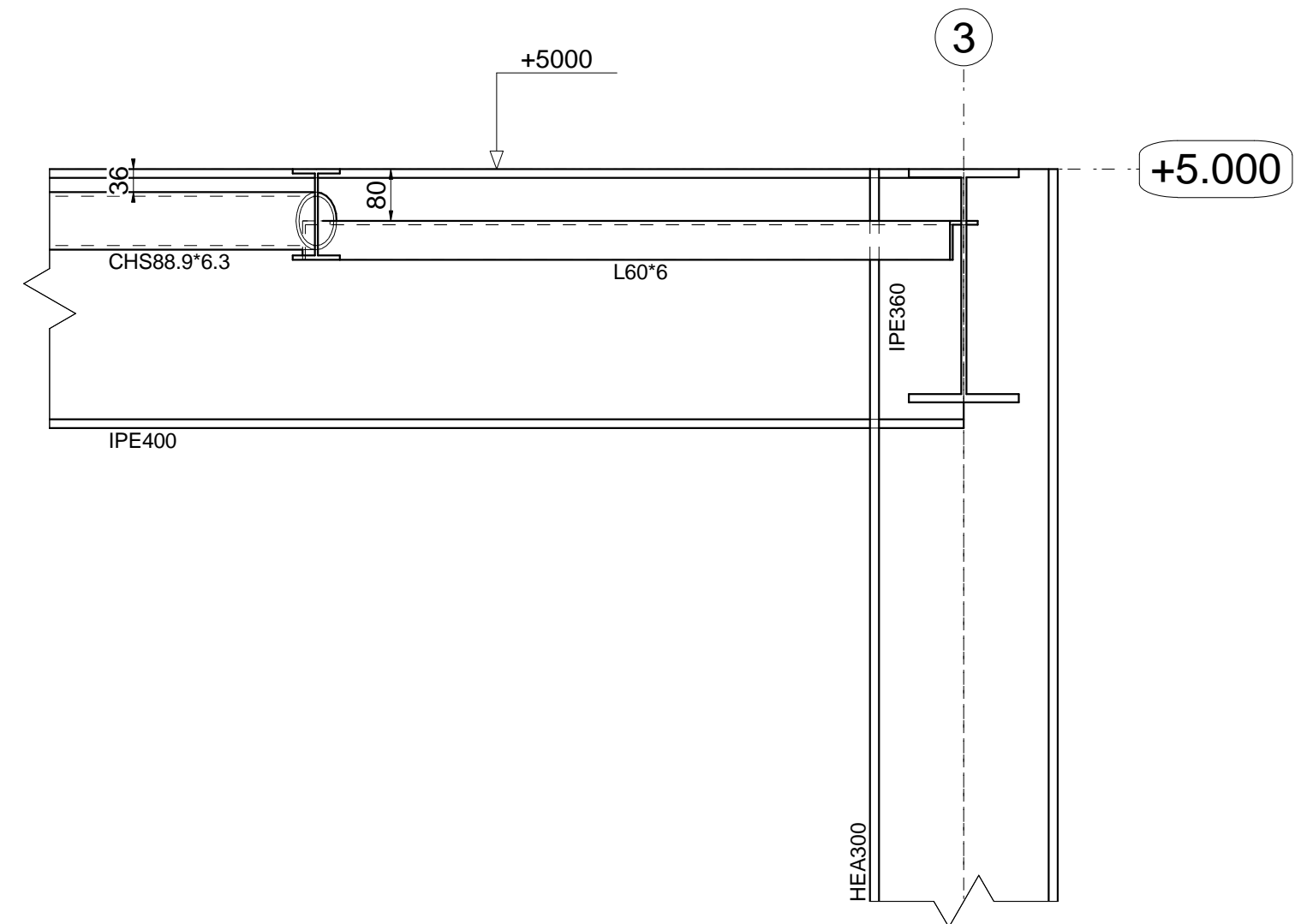


Plan at elev. 5000

- Model the Floor beams and Horizontal Bracing as shown
1. Angle Horizontal Bracing is located 80mm below TOS (Top of Steel). CHS profiles are 36mm below TOS
  2. All Dimensions are in millimeters
  3. All material is S235
  4. Assume reasonable values for any input not given



3D View



A - A  
To Show level of Horizontal Braces